

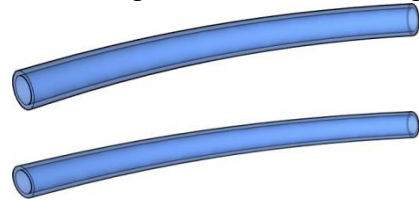
All-You-Need Omni Gear Pack

Contents

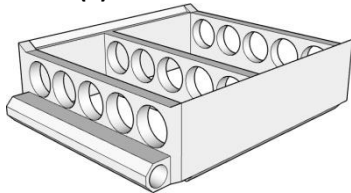
(1) Omni Nest Large



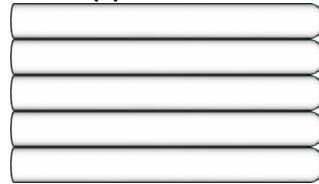
Plastic tubing – 3 feet small, 3 feet large



(1) Test Tube Rack



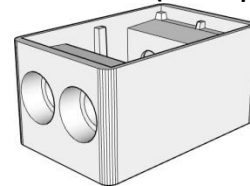
(5) Test Tubes



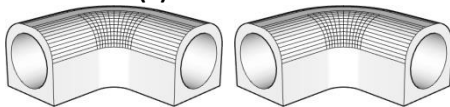
(1) Test Tube Adapter



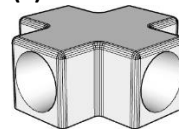
(1) Test Tube Portal (lid not pictured)



(2) L-Connectors



(1) X-Connector



Omni Nest Assembly

The Omni Nest comes nearly completely assembled. There are just a few things that remain for you to do.

1. Remove the protective covering from the various acrylic pieces.
2. Attach the outworld. The outworld can be attached permanently to the top of Omni Nest or via tubing.
 - a. To attach permanently to the top of the Omni Nest:
 - i. Use a screw driver to remove the bottom acrylic plate from the outworld in order to expose the rectangular hole in the outworld floor.
 - ii. Use a screw driver to remove the top acrylic plate on the back of the Omni Nest.
 - iii. Place the outworld on top of the Omni Nest, aligning the rectangular holes in order to give ants access, and then secure it in place using the screws.
 - b. To attach via tubing:
 - i. Place the included door piece into the door slot with the hole exposed to the inside of the Omni Nest. Connect the provided tubing, or your own tubing, between the door piece and the outworld. It is recommended that you use a sealant of some kind, like clear silicone, to make sure the connection is secure.
3. Hydrate the nest by adding water through the small holes above the blue sponges.

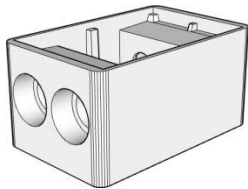
Suggested Uses of the Products

Test Tube Adapter



The purpose of the Test Tube Adapter is to allow easy connection between a test tube and the large vinyl tubing. This helps avoid the use of tape to make connections. Now you can easily connect your small test tube colonies to outworlds, new, fresh test tubes, formicaria, etc.

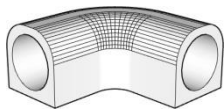
Test Tube Portal (lid not pictured)



The Test Tube Portal serves several purposes and solves some annoying problems faced by ant keepers.

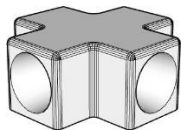
1. Directly connect an ant colony in a test tube and the Test Tube Portal becomes a miniature outworld. Makes feeding your colony much easier.
2. Directly connect another test tube with a fresh setup of water. Makes switching test tubes due to mold or dry out much easier.
3. Directly connect another test tube with sugar water.
4. Directly connect vinyl tubing and the Test Tube Portal becomes a small hub, allowing for multiple connections and directions for tubing to go.

L-Connector



The L-Connector makes it easy to make a 90° turn in your tubing. Simply connect two pieces of tubing to each end and you're ready to go.

X-Connector



The X-Connector allows for four pieces of tubing to come together.